

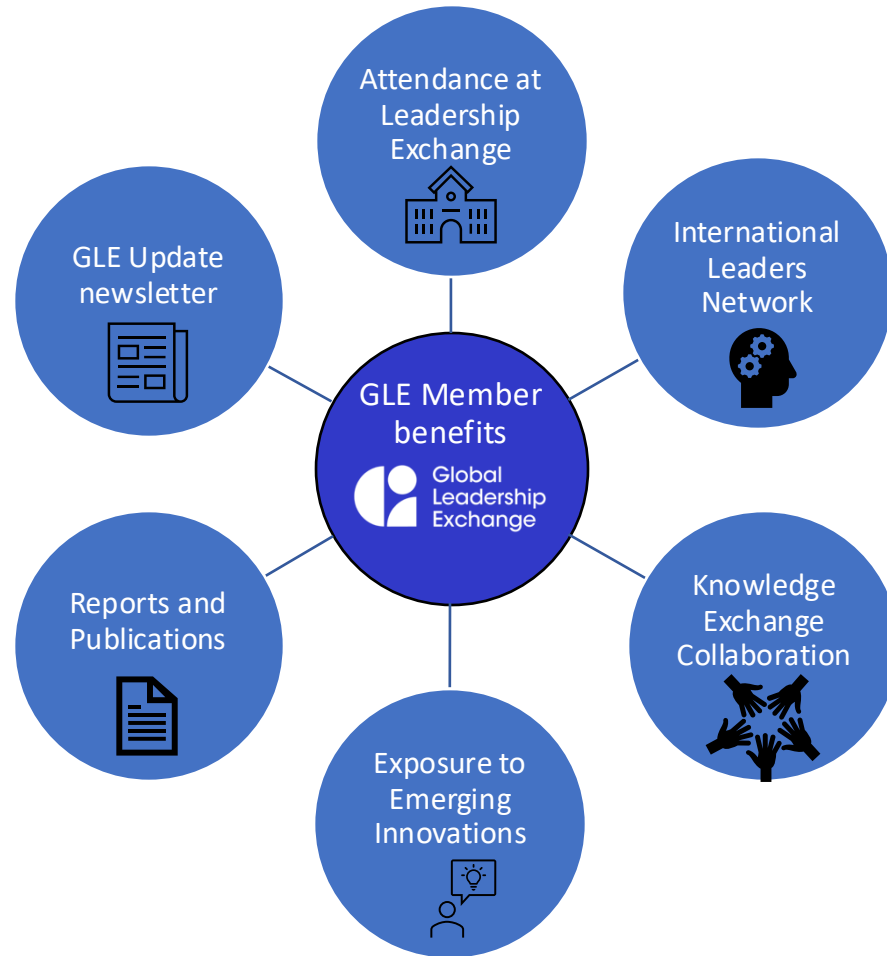


Global Leadership Exchange – Working globally to develop and support leaders by rapidly sharing knowledge and experience

Sean Russell
COO and European Lead GLE

March 2025

GLE's purpose



GLE works to support **rapid knowledge exchange** about innovations and problem solving in the mental health, addiction and disability sectors.

We develop and support leaders through the creation of networks, collaboratives and partnerships.

We engage organizations and countries to achieve high quality supports and services with a focus on people with lived experience of mental health distress and disability.

Through a **collective and inclusive approach to leadership development**, we work to engage all partners in all sectors and across the lifespan, to enact meaningful change that supports people to maintain and achieve positive mental health and well-being and to live in healthy and inclusive environments.

GLE is **free to join** for leaders in investing Countries / Organizations.

How is leadership defined?

LEADERSHIP ROLES CAN BE

Indirect

Influence is through research, development, evaluation of policy and/or lived experience that guides service delivery, for example.

Direct

Influence is through leading an organization with a service delivery mandate, for example.



Leaders work in all kinds of organizations.

Leaders work in all kinds of organizations. Examples include: community-based, government, non-government, private, educational institutions, and faith-based organizations. The organizations may provide services or fund them or may do both.

Values in leadership

Good leadership is values based and values led.

The GLE leadership framework is intended to include the important elements of leadership in delivering meaningful, transformational change in the mental health, addiction and disability fields, in all settings and at all life stages.

It provides a focus on the behaviours that promote genuine inclusivity in organisations. It was developed in co-productive way with our members.

The framework is to be viewed as a work in progress as it will be open to regular review, thus it should be seen as a living document.



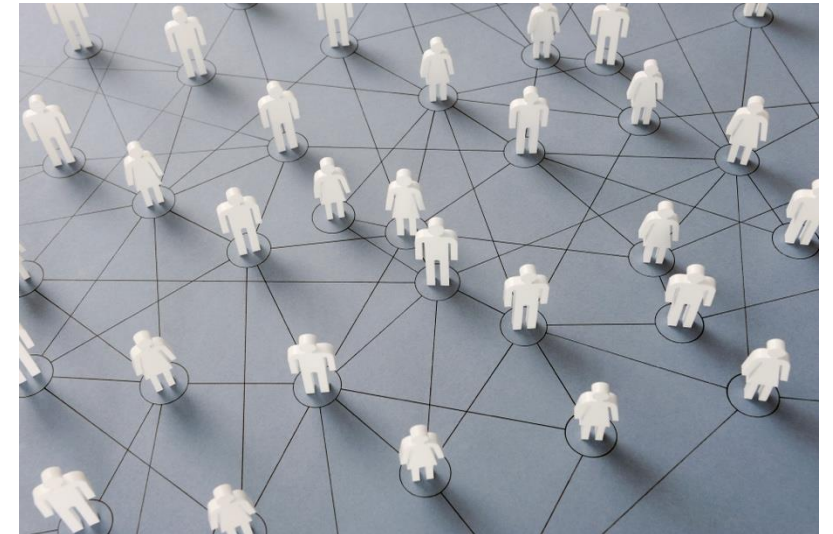
How we deliver

GLE brings together leaders in 13 countries and regions (Australia, Canada, Emilia Romagna (Italy), England, the Netherlands, New Zealand, Northern Ireland, Republic of Ireland, Scotland, League of Mental Health, Slovakia, Sweden, the United States of America and Wales.)

The organisation has approximately 5,500 members globally, made up of leaders in the mental health, addiction and disability fields. Those leaders work in a variety of organisations, in health, social care, justice, NGOs, housing to mention just a few.

GLE hosts and facilitates a range of international collaborative groups including:

- **Global Leaders Advisory Group** - Disability
 - **Global Leaders Advisory Group** - Mental Health
 - Urban mental health / Rural behavioural health
 - Peer Leadership
 - Women's leadership
 - Public mental health
 - Children, youth and families
 - Emerging leaders
-
- Continuing to grow and build new links and partnerships
 - Exploring further work in low and middle-income countries
 - Connect leaders to help solve key problems and challenges
 - Host global Leadership Exchange event (Canada 2026)



Our Leadership Exchange - Utrecht, Netherlands 2024

The Event June 2024

- **In-Person Network Meeting:** June 27 and 28
- **In-Person Workshops (Matches):** June 24 and 25

Visitors came from all over the world, primarily from our thirteen investing countries/regions

Plenary and Breakout sessions within the Network meeting included:

- Inclusion, leadership and Lived/ living Experience
- Women's Leadership – impact for equity and inclusion in mental health, addiction and disability
- Youth Perspectives on Flourishing and Wellbeing
- Right Care in the Right Place
- Building Communities in Polarised Societies
- International Approaches to Developing Disability Strategies
- [Leadership Exchange 2024 - Global Leadership Exchange \(gle.world\)](https://gle.world)





Our Leadership Exchange in pictures
Link : [GLE 2024 photo gallery \(youtube.com\)](https://www.youtube.com/watch?v=GLE2024photo_gallery)

Our Leadership Exchange - Utrecht, Netherlands 2024 and beyond

- **In-Person Workshops (Matches):**
- **A match** is a two-day in person immersive event on a theme, i.e., Peer Leadership:
- The agenda is co-produced by participants and enables all voices to be heard
- Co-designed output and outcome (Heiloo Declaration)
- Learning has been shared to support the WHO European Roadmap for Peer Support integration
- Maintaining connections is the key role for GLE as a convenor and to enable this:
 - GLE is building a new membership portal
 - Developing a forum space for connecting and sharing
 - Convene the Peer Leadership network every three months.



THE HEILOO DECLARATION

PEER AND LIVED EXPERIENCE LEADERSHIP

The experience of living with and/or supporting loved ones with mental health and/or substance use results in specialised and unique expertise, knowledge and abilities critical to leadership in recovery, wellness, autonomy, authorship and human rights.

Lived and living experience leadership is to be valued and respected. Our expertise is to be used globally to transform systems, services, and societies to unlock the potential of recovery-based approaches and initiatives. We contribute to improving the lives of all who are impacted by challenges to their mental wellbeing, and hold a lens of ensuring citizenship for all impacted by mental health and substance use challenges.

Lived experience leadership inherently recognises cultural perspectives to recovery and wellbeing as an authentic knowledge base which embraces opportunities for developing, valuing and respecting people from different cultural backgrounds to practice, through the worldview of their lens. This enhances system transformation.

It is a global imperative to recruit, train, nurture and support authentic lived/living experience leadership throughout all design, delivery, policy development, and evaluation/research efforts.

Lived and living experience leadership must be supported and visible throughout all levels – from individuals leading their own recovery journeys to senior leadership positions to smash through the bigotry of low expectations.

There is an essential need to support leadership among diverse and marginalised populations including indigenous communities, people of colour, ethnic groups, youth, 2SLGBTQ+, rural, veterans, women, people with disabilities, refugees/migrants, and others.

Leaders with lived and living experience lead with the critical principles of empowerment, mutual support, rights protection, respect, and social change. They lead with whole person approaches, and a belief in resilience, wellness, accountability, self-determination/choice, and social inclusion. They lead, using a strengths-based approach, with the recognition that there are many pathways, and the importance of hope as the catalyst of the recovery journey.

We invite all to join with us in the support of lived and living experience leadership across the globe.



The above was drafted and accepted by participants from 12 nations at the June 24-25, 2024 Peer and Lived Experience Leadership Match sponsored by the Global Leadership Exchange. We acknowledge that we do not represent all voices of lived/living experience and honour the leadership of past generations that have created the foundation on which our efforts stand.

Next steps

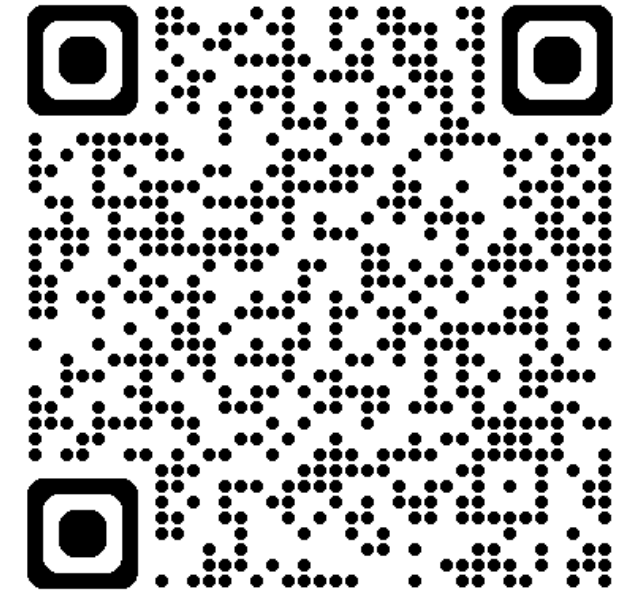
GLE is now starting to plan for the next Leadership Exchange in Canada 2026.



We have a strong international mental health network and we are keen to strengthen with new leaders within the Peer Leadership arena.



We are an international organization supporting leaders to grow, learn and develop, offering a space where trust lies at the foundation of all that we do.



Scan the QR code join us !