



International Initiative
for Mental Health
Leadership

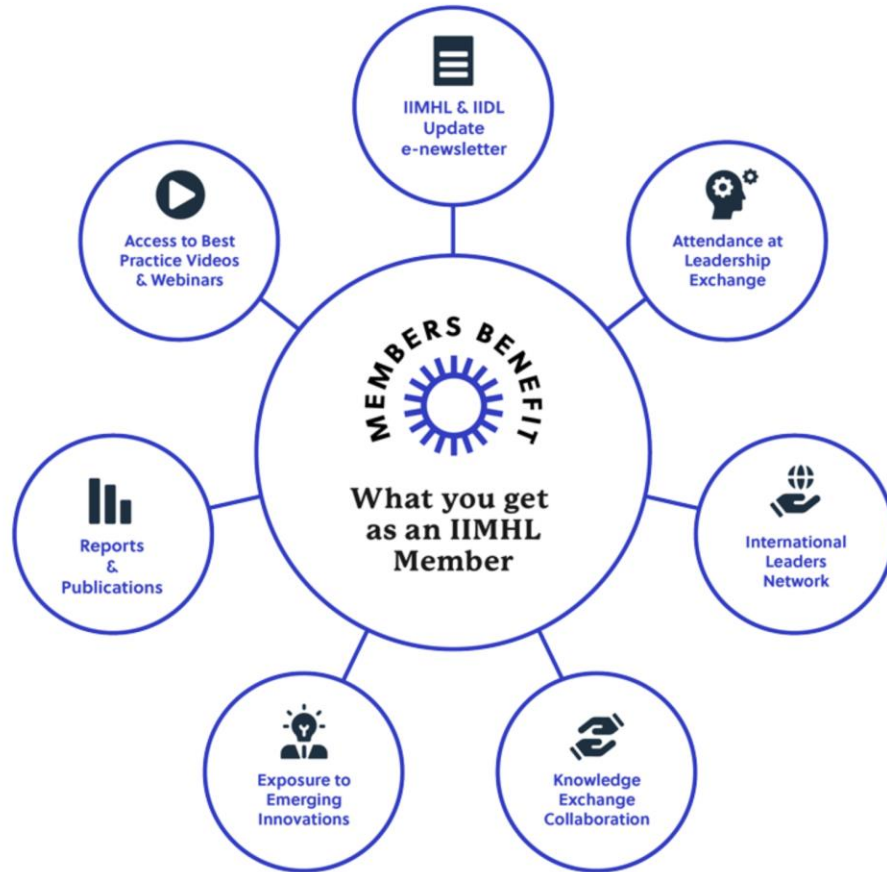
International implications of working together globally

Międzynarodowe implikacje współpracy na całym świecie

Sean Russell
European Lead
IIMHL

8th June 2022

IIMHL's purpose



IIMHL works to support **rapid knowledge exchange** about innovations and problem solving in the mental health, substance use and disability sectors.

We develop and support leaders through the creation of networks, collaboratives and partnerships.

We engage organizations and countries to achieve high quality supports and services with a focus on people with lived experience of mental health distress and disability.

Through a **collective and inclusive approach to leadership development**, we work to engage all partners in all sectors and across the lifespan, to enact meaningful change that supports people to maintain and achieve positive mental health and well-being and to live in healthy and inclusive environments.

How is leadership defined?

LEADERSHIP ROLES CAN BE

Indirect

Influence is through research, development, evaluation of policy and/or lived experience that guides service delivery, for example.

Direct

Influence is through leading an organization with a service delivery mandate, for example.



Leaders work in all kinds of organizations.

Leaders work in all kinds of organizations. Examples include: community-based, government, non-government, private, educational institutions, and faith-based organizations. The organizations may provide services or fund them or may do both.

Values in leadership

Good leadership is values based and values led.

The IIMHL leadership framework is intended to include the important elements of leadership in delivering meaningful, transformational change in the mental health, substance use and disability fields, in all settings and at all life stages.

It provides a focus on the behaviours that promote genuine inclusivity in organisations. It was developed in co-productive way with our members.

The framework is to be viewed as a work in progress as it will be open to regular review, thus it should be seen as a living document.



How we deliver

IIMHL brings together leaders in 10 countries and regions
There are 5,000 individual leaders in the network

IIMHL hosts and facilitates a range of international collaborative groups including:

- Urban mental health
- Rural mental health
- Women's leadership
- Public mental health
- Children, youth and families
- Emerging leaders

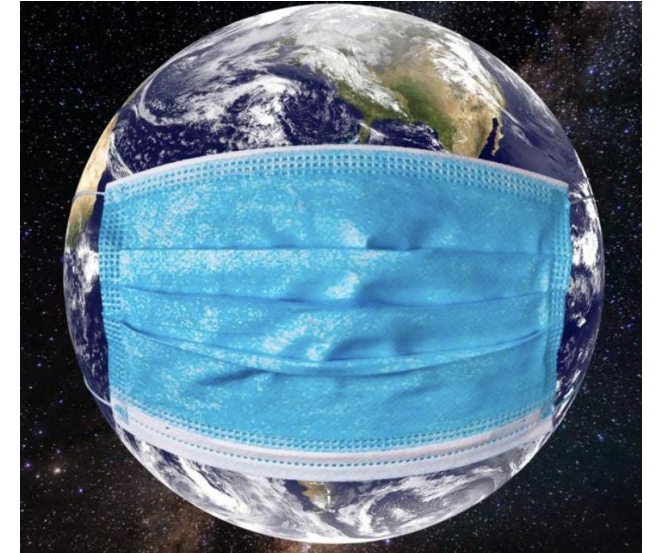
Continuing to grow and build new links and partnerships
Exploring further work in low and middle-income countries

Connect leaders to help solve key problems and challenges
Host international leadership exchange event –
([New Zealand](#) / [Washington](#) and [Dublin](#) October 2022 and [Netherlands 2024](#))



The pandemic changed everything, or did it?

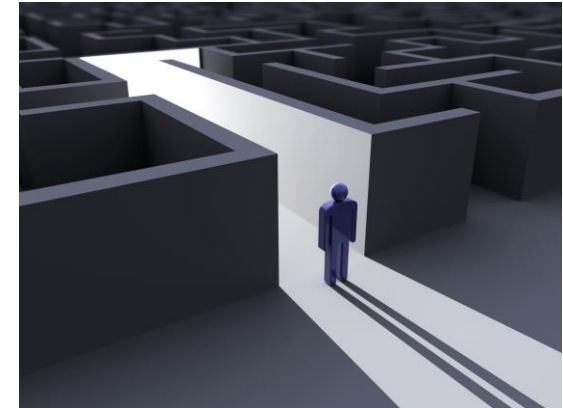
- Countries reached out to one another
- Leaders were open about what they didn't know and needed to learn
- Willingness to share increased
- Collaboration between countries and leaders achieved greater importance
- We saw a growth in interest and attention regarding mental health
- A pivot to more digital convening
- Desire to re-establish in-person connections and learning



Core challenges identified for further international learning

Key issues relating to these themes were identified by our Country Liaisons and Sponsoring Countries Leadership Group (SCLG):

- Children, young people and families
- Data and benchmarking
- Learning the lessons
- Refugee / displaced communities challenges
- System wide approaches
- Trauma informed approaches
- Workforce – current and future



Next Steps - Moving towards the Leadership Exchange 2022.

We are continuing to build strong collaborations internationally

We are working to finalise the programme for the leadership Exchange in 2022

Our asks of you -

1. We would encourage you to engage / participate in the Leadership Exchange in October 2022 to develop stronger international collaborations
 - Virtual Matches taking place between 3rd to 20th October
 - Face to Face European Regional Hub
 - Dublin, Ireland on the 26th and 27th October
2. We would encourage leaders of all levels to Join IIMHL / IIDL
3. We hope that you will spread the word about IIMHL/ IIDL and encourage people to be part of our growing global social movement

Then starting the journey towards the Netherlands Leadership Exchange 2024



Thank you for listening

Dziękujemy za wysłuchanie

Sean@iimhl.com

+44(0) 7790845310

@russells70



International Initiative
for Mental Health
Leadership

Copyright © 2022 IIMHL - All Rights Reserved