

Webinar: Learning from each other

"Hard to engage in assertive care"

08.09.2021 - 7 pm - 9 pm

7:00 PM

Musical opening by Erik Robyn 'Pittig in 5/8'

7:05 PM

Welcome by Rene Keet

7:07 PM

Introduction by Marianne Destoop

7:10 PM

Presentation by Ellen Bergmans

'Assertive outreach & engagement' +Q&A

7:40 PM

Movie + presentation by Luna Van Suetendael

'Engaging those who are homeless' +Q&A

8:15 PM

Movie + presentation by Lise Docx

'Hard to engage dually diagnosed inpatients +Q&A

8:50 PM

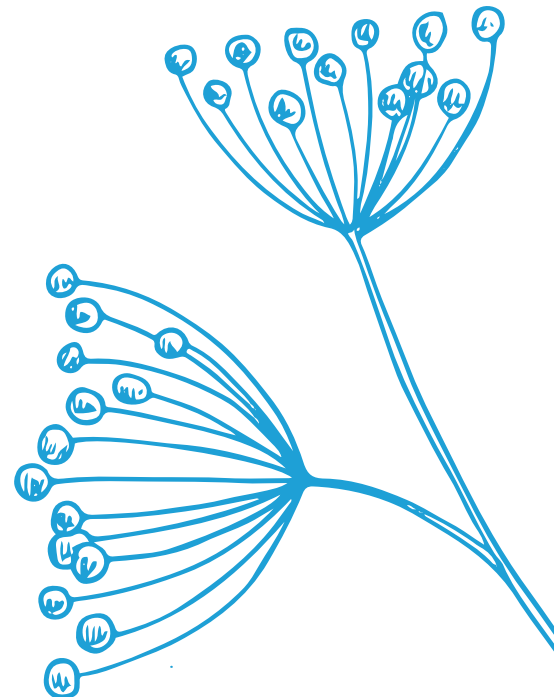
Concluding words and short information
about next EUCOMS and Hub events

8:52 PM

Concluding words Marianne Destoop

8:55 PM

Musical closing by Erik Robyn 'Song for a movie'



Register here

