



PATHWAYS TO RECOVERY

The 8th Meeting of the European Community Based Mental Health Service Providers (EUCOMS) Network

European Partnership for Delivering Quality Community Mental Health Services

- **11th February, Plzeň, Czech Republic** -

PRELIMINARY PROGRAM (v2)

Moderator: Martin Fojtíček, Founder of Ledovec, the host organization

Day 1 – February 11th 2020	
9:00-9:30	Introduction and welcoming -Jitka Pečená, member of self-advocate organization TOSEVÍ and regional coordinator in project Destigmatization) -Martin Baxa, Mayor of Plzeň (www.plzen.eu), -Jan Vevera, head of Psychiatric clinic of Univerzity Hospital in Plzeň and regional sponsor of transformation of mental health system in CZ (www.reformapsychiatrie.cz) -Rene Keet, Chair of EuCOMS
9:30 – 10:00	Recovery Jan Pfeiffer
10:00-10:30	Round table on triple expertise for recovery Martin Holly, Torbjørn Mohn-Haugen, Philippe Delespaul Moderator: Dick van der Vlugt
10:30-11:00	Service users platform Beverly Rose & Torbjørn Mohn-Haugen
11:00 – 11:30	Coffee break & networking
11.30 – 12.00	The Recovery perspective in Andalusia Evelyn Huizing
12:00-12:45	EUCOMS business <ul style="list-style-type: none"> • New secretariat • Legal entity • Draft strategy plan • Meeting of new board • Participation agreement
12:45 – 13:15	Closing summary René Keet Jitka Pečená
13:15 -14:00	Lunch break menu for 6 EUR offered in DEPO2015 coffee (vegetarians welcome!)





11th February 14:00 17:00 SITE VISITS

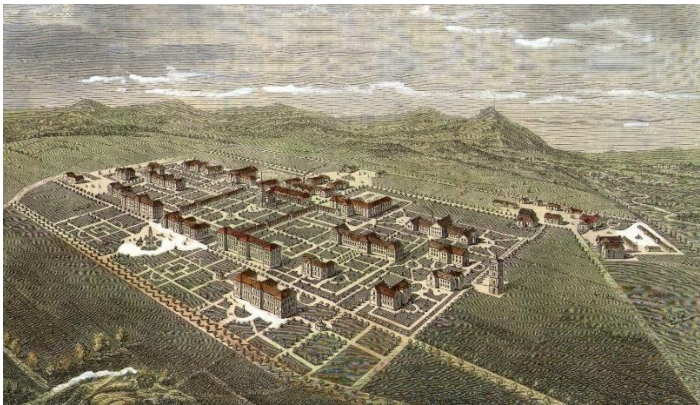
	SITES	DESCRIPTION	MEETING POINT	CONTACT
Visit 1	Mental hospital in Dobřany (https://www.pldobrany.cz/)	Largest historical mental hospital in CZ (1200 beds) whose transformation is (very) slightly starting. Presentation on basics of Czech MH system included.	By coach from DEPO2015 20 to 40 participants	Will be specified (for now Martin Fojtíček, ledovec@ledovec.cz , +420 777 019 834)
Visit 2	Psychiatric clinic of Univerzity Hospital in Plzen (https://psych.fnplzen.cz/)	76 beds psychiatric clinic with wards for acute care, patients with depression or anxiousness, kid and people with addiction, day centre etc. Presentation on basics of Czech MH system included.	DEPO2015 By public transport	Will be specified (for now Martin Fojtíček, ledovec@ledovec.cz , +420 777 019 834) Presentation given by head of the clinic Jan Vevera
Visit 3	Community multidisciplinary team in Plzen at Ledovec (http://www.ledovec.cz/centrum-dusevniho-zdravi)	First community based multidisciplinary team in the region providing community based care for people with experience of psychosis (from spring 2019). Presentation on basics of Czech MH system included.	DEPO2015 By public transport	Will be specified (for now Martin Fojtíček, ledovec@ledovec.cz , +420 777 019 834)
Visit 4	CHRC (Clubhouse and Recovery College) of Ledovec (http://www.ledovec.cz/projekty-ledovce/chrc)	Clubhouse like project started by Ledovec in 2017, now slowly overtaken by peer workers. Presentation on basics of Czech MH system included.	DEPO2015 By public transport	Will be specified (for now Martin Fojtíček, ledovec@ledovec.cz , +420 777 019 834)
Visit 5	Ledovec house in Ledce (http://www.ledovec.cz/socialni-sluzby/item/73-dum-ledce)	“trip to history of Ledovec”, its original ideas and first recovery experience. Presentation on basics of Czech MH system included.	DEPO2015 By minivans (up to 18 people)	Will be specified (for now Martin Fojtíček, ledovec@ledovec.cz , +420 777 019 834)
Visit 6	Meeting with municipality	Presentation of municipal projects connected with MH (social flats, housing first projects, homelessness, destigmatization, ...). Presentation on basics of Czech MH system included	DEPO2015 By public transport or by walk)	Will be specified (for now Martin Fojtíček, ledovec@ledovec.cz , +420 777 019 834)



18:00	Recovery2020 Conference starts! in DEPO2015
-------	--

Site vistis pictures:

- 1) Mental Hospital in Dobřany



- 2) Psychiatric Clinic in Plzeň





3) Community multidisciplinary team of Ledovec



4) Clubhouse and Recovery College



5) House in Ledce





6) Municipality of Plzeň

